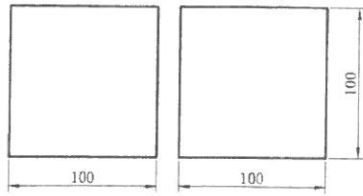


# Installation

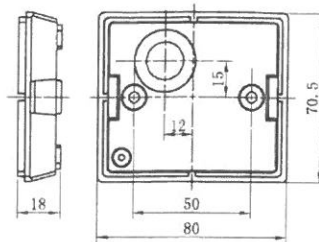
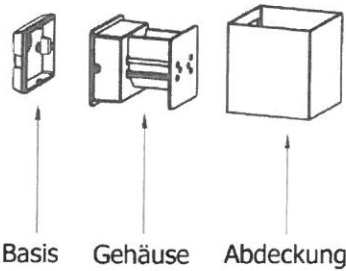
dot-spot GmbH & Co. KG  
Industriestraße 1 A 90592 Schwarzenbruck  
Tel: +49 (0) 9128/ 722217-0 Fax: +49 (0) 9128/ 722217-9  
Mail: service@dot-spot.de Web: dot-spot.de

## ■ Produkt Parameter



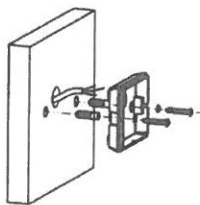
1. Model: Ljoma 6
2. Versorgungsspannung: AC 90-260 V
3. Leistung: LED 6 W
4. Schutzart: IP54
5. Schutzklasse: 1
6. Temperaturspanne: -15° bis +50°

## ■ Komponenten



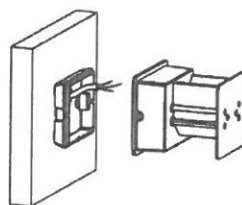
## ■ Installationsstufen

A



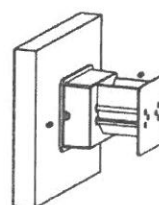
zur Installation Strom abschalten

B



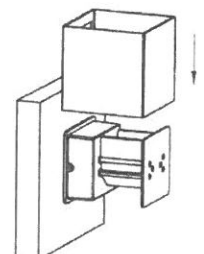
Anschluss von L, N  
und Schutzleiter

C



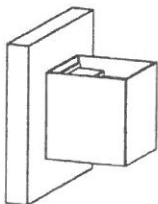
Fixieren des Gehäuses mit  
den Inbusschrauben

D



Abdeckung aufsetzen

E



F

G

H

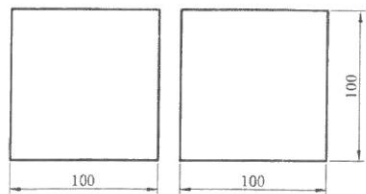
## ■ wichtige Hinweise

1. Die Leuchte sollte nur von autorisierten Fachpersonal installiert werden.
2. Bitte prüfen Sie, dass bei Installation der Strom abgeschaltet ist.
3. Lesen Sie die Anleitung sorgfältig durch.

# Instrucion Mounting

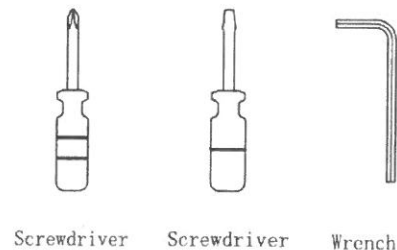
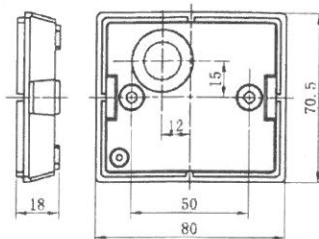
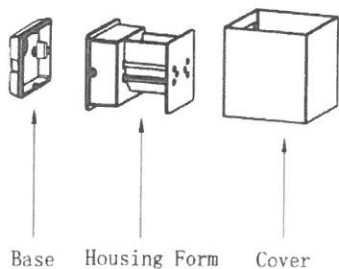
dot-spot GmbH & Co. KG  
 Industriestraße 1 A 90592 Schwarzenbruck  
 Tel: +49 (0) 9128/ 722217-0 Fax: +49 (0) 9128/ 722217-9  
 Mail: service@dot-spot.de Web: dot-spot.de

## Product Parameters



1. Model: Ljoma 6
2. Rated Voltage: AC 90-260V
3. Rated Power: LED 6W
4. IP Grade: IP54
5. Insulation protection level: Class I
6. Operating Temperature: -15~+50°C

## Components and Tools



## Installation Steps

<p><b>A</b></p> <p><b>OFF</b></p> <p>▲ Please be sure to fasten tightly of the base.</p>	<p><b>B</b></p> <p>▲ Live line for L terminal, Null line for N terminal, Ground line for E terminal.</p>	<p><b>C</b></p> <p>▲ Make sure the screws be fixed tightly.</p>	<p><b>D</b></p>
<p><b>E</b></p> <p><b>ON</b></p> <p>✓</p> <p>▲ Connect the power supply, and light up the lamp.</p>	<p><b>F</b></p>	<p><b>G</b></p>	<p><b>H</b></p>

## Attention

1. Lamp should be installed by professional electrician;
2. Check the power switch has been turned off;
3. Please read this user guide carefully before installation and keep for future reference.